

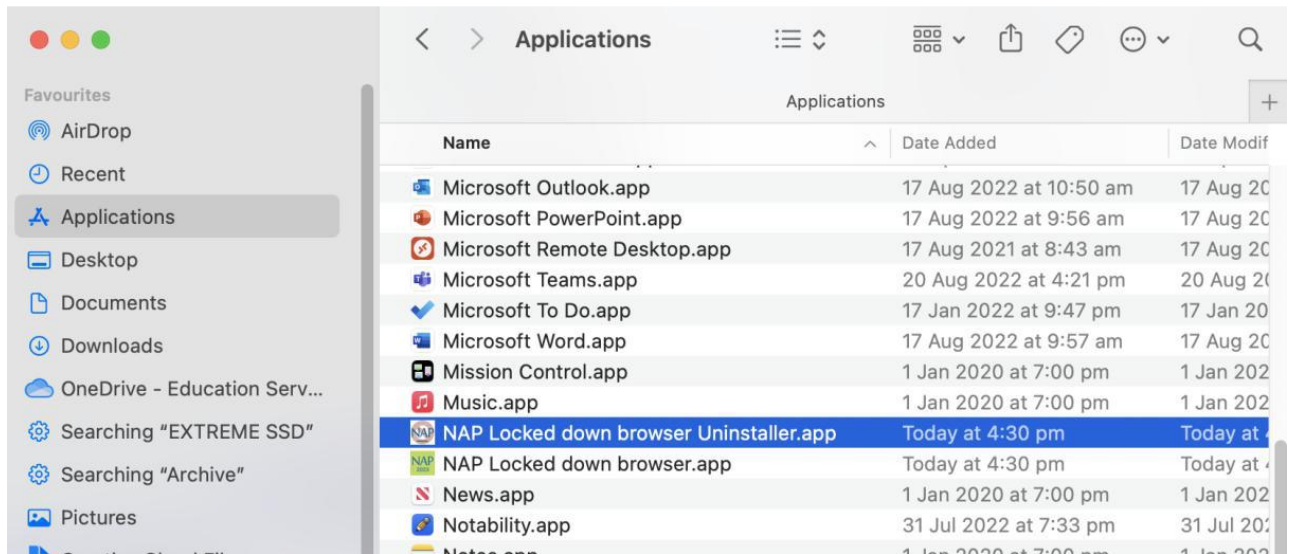


## NAPLAN LOCKED DOWN BROWSER – MACOS GUIDE

### STEP 1: UNINSTALL THE OLD VERSION (IF YOU ALREADY HAVE IT)

If you installed the NAPLAN browser in a previous year, you'll need to remove it before installing the new version. This only takes a minute.

1. Using the operating system **Finder** app, search for the **NAP Locked down browser** in the **Applications** folder.



2. Select **NAP Locked down browser Uninstaller.app** and follow the prompts.

It may take a short moment to finish. Once it disappears from the list, you're ready to install the new version.

If you don't see it listed, that just means it isn't installed - you can move straight to Step 2.

### STEP 2: DOWNLOAD THE NEW BROWSER

1. Go to the Online National Assessment Platform website.  
<https://www.assessform.edu.au/naplan-online/locked-down-browser#downloads>
2. Select the **Mac** download button.

**Application**  
v5.10.5 (Updated: 12-Jan-2026)

**Mac**

**Download for MacOS 14 or later (.pkg)**

**User guide**

[MacOS - Locked Down Browser User Guide](#) [View](#)  
PDF | 2.99 MB | v3.09 | Last updated: 12 Jan 2026 [Download](#)



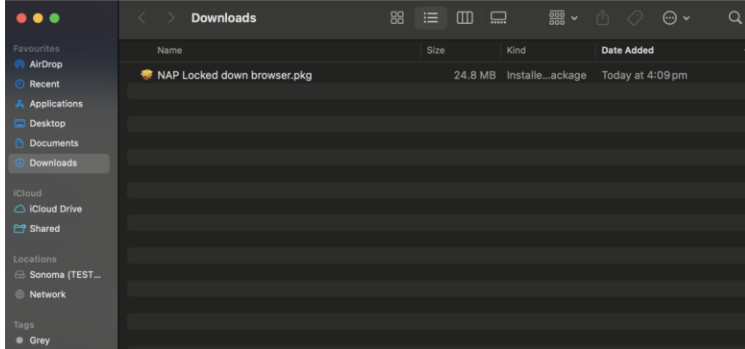
# Aberfoyle Park High School

36a Taylors Road East ❖ Aberfoyle Park ❖ SA ❖ 5159

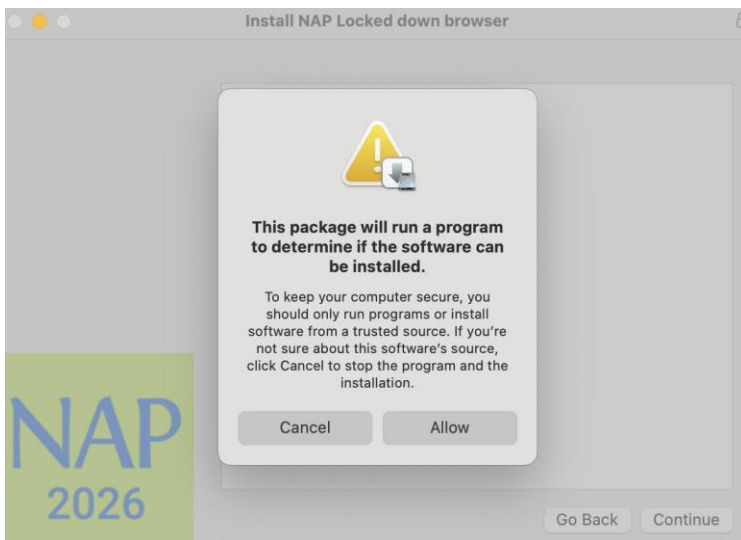
Telephone: 08 8270 4455 ❖ Facsimile: 08 8370 5819 ❖ Email: info@aphs.sa.edu.au

## STEP 3: INSTALL THE BROWSER

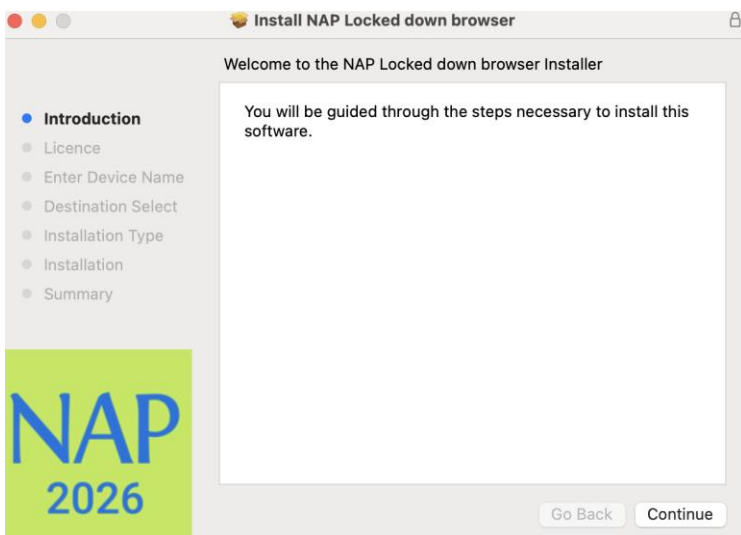
1. Using the **Finder app**, navigate to the **Downloads** folder and search for the **NAP Locked down browser** file.



2. Double-click NAP Locked down browser.pkg to launch the installer.
3. A prompt requesting for permission to install the software may display. Select **Allow**. The installation wizard will launch.

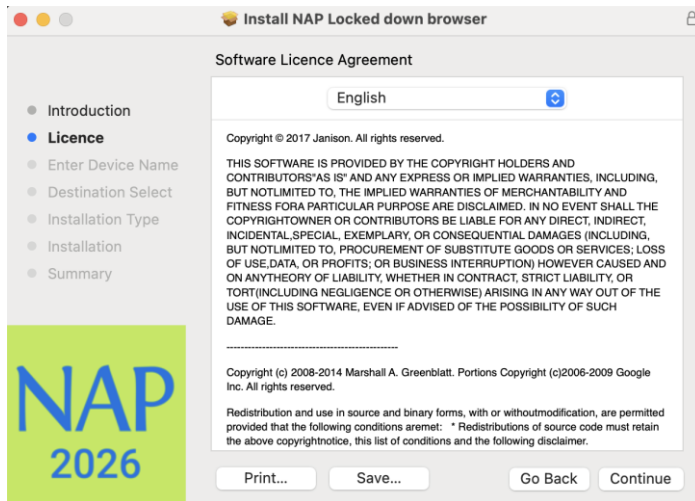


4. Select **Continue**.

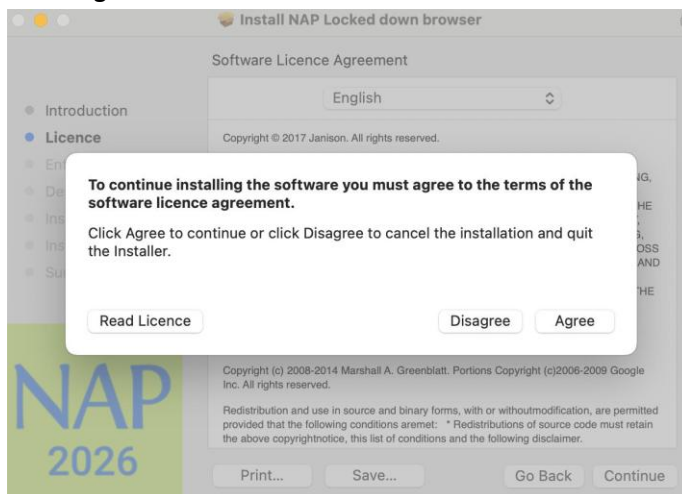




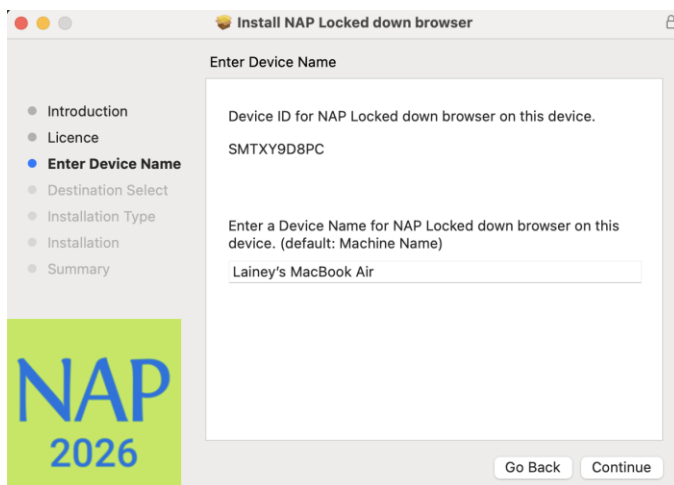
5. The Software Licence Agreement will display. Select **Continue**.



6. Select **Agree**.



7. Enter the device name and select **Continue**.



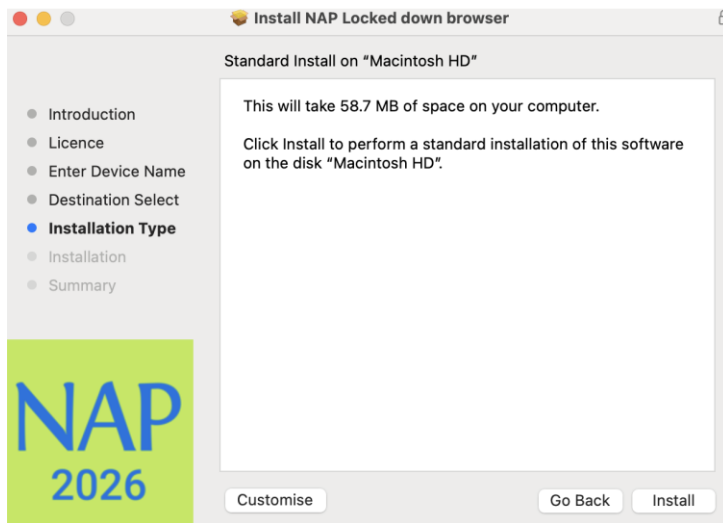


# Aberfoyle Park High School

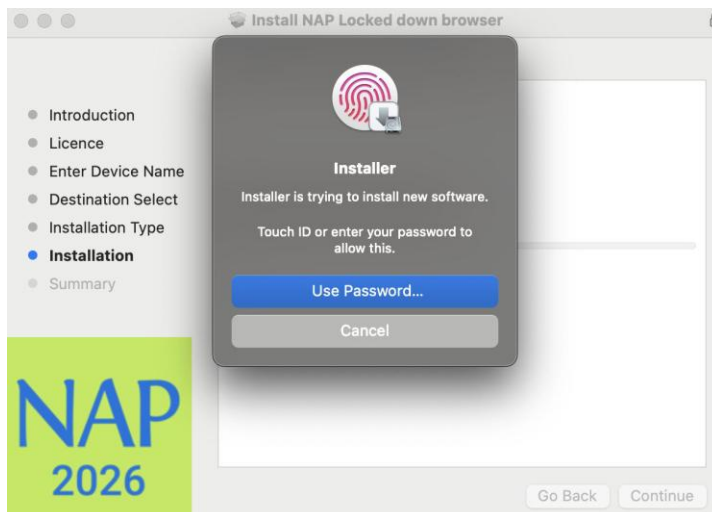
36a Taylors Road East ❖ Aberfoyle Park ❖ SA ❖ 5159

Telephone: 08 8270 4455 ❖ Facsimile: 08 8370 5819 ❖ Email: info@aphs.sa.edu.au

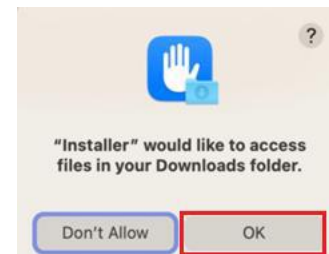
## 8. Select **Install**.



## 9. A prompt requesting your user Touch ID/password to install the software may display. Enter the **Password** and select **Install Software** to continue.



NOTE: Depending on the MacOS version, you may be presented with a prompt requesting access to the Download folder. Select **OK** to continue installation.



## 10. Once the installation has completed, select **Close**.

