



Aberfoyle Park High School



School information brochure



36a Taylors Road, Aberfoyle Park, SA 5159
08 8270 4455

aphs.info970@schools.sa.edu.au
www.aphs.sa.edu.au

Overview



Welcome	1
Year 7 curriculum	2
Academic programs	3
IGNITE program	3
International Baccalaureate (IB) Diploma Programme	3
Specialist music program	4
The arts	4
Making subject choices	5
SACE	5
Career development	6
Flexible industry programs	6
International program	7
Sport	7
Wellbeing	8
Enrolment information	9
Principal's tour booking	9
In school facilities and activities	10
Academic facilities	10
Extracurricular activities	10
Uniform policy	11

Welcome



Our students grow in an environment that has a long standing and proud tradition of providing innovative, creative and collaborative educational learning experiences. This approach is designed to support student participation and engagement in their learning and their achievements. Our graduating students achieve not only in their academic studies, they are also equipped to be competent citizens to meet the ever changing demands of our world. We strive to ensure they act as responsible local and global citizens.

We offer a wide range of subjects and co-curricular opportunities to support our students to develop and strengthen their talents. In the senior school this includes the South Australian Certificate of Education, International Baccalaureate Diploma Programme and vocational education and training. Our dedicated professional teaching and support staff are acknowledged for their knowledge, skills and enthusiasm. These qualities support the personal attainments and wellbeing of all of our students.

The school has a number of specialisations including an outstanding visual and performing arts program which includes studies in drama, dance, visual arts, design and music. Students also have the opportunity to be involved in an extensive sports program.

Aberfoyle Park High School is an official Department for Education school for gifted students in the southern metropolitan area of Adelaide. The IGNITE program is designed to cater for the academic, social and emotional needs of gifted students. We also have a learning support program to ensure that all students can be successful through tailored support. There is little question that we are able to provide and pride ourselves in supporting each and every student.

Visitors are always welcome to come and see Aberfoyle Park High School for themselves. School tours are available as well as an Open Night and many parent/caregiver evenings and events.

Please contact the school by either phone 8270 4455 or email dl.1673.info@schools.sa.edu.au if you would like a tour of the school, receive further information or discuss a possible enrolment.

Marion Coady
Principal

Year 7 curriculum

Core subjects

Occur each week for the allocated lessons across the year.

English	4 lessons
Humanities	4 lessons
Science	4 lessons
Mathematics	4 lessons
Languages Choice of Spanish or Japanese	4 lessons
Wellbeing for learning	1 lesson
Health and physical education One semester	4 lessons

Rotation subjects

Each subject has 4 lessons a week for one term on rotation across year 7 and 8.

- Music
- Art
- Dance
- Drama
- Digital technology (coding, robotics)
- Material technology (woodwork, metal work)
- Advanced technology (CAD design, 3D printing)
- Food and fibre (cooking, hospitality)



Year 7 to 12 curriculum

The online curriculum handbook outlines the curriculum requirements, choices and opportunities students have at Aberfoyle Park High School.

Students undertake study within the mandated frameworks of the South Australian Curriculum for years 7 to 10, the South Australian Certificate of Education (SACE) for years 11 to 12 and the International Baccalaureate Diploma Programme.

[Please click to view our school curriculum for all year levels.](#)



Academic programs

IGNITE program

IGNITE is a year 7 to 10 specialist learning program catering to the needs of gifted students. The program provides students with an environment to explore and develop their academic gifts, while supporting the development of fundamental life skills.

The unique features of the IGNITE program include:

- the opportunity to explore wider concepts within and across the core disciplines of English, mathematics, science and humanities
- a two-year specialist music program where students have the opportunity to learn an instrument
- recognition of the academic and intellectual benefits of learning an additional language.

All students can apply for the IGNITE program regardless of zone.

[Please click for further information on the IGNITE program.](#)



International Baccalaureate Diploma Programme (IBDP)

The International Baccalaureate Diploma Programme (IBDP) is a secondary education course offered to students from year 11 and is undertaken over two years. It is another way for students to move into post school options including further education and training. The IBDP provides an academically rigorous learning experience aimed at developing students as active contributors within their community and beyond. Students study specific subjects, while reflecting on their identity as a learner and what it means to be a global citizen.

The unique features of the IBDP include:

- broad curriculum, where students study a range of disciplines to develop their skills and understanding
- distinct global context in the exploration of learning
- opportunity to be recognised for achievements both nationally and internationally.

Find out more about the IBDP by emailing dl.1673.info@schools.sa.edu.au

Academic programs

Aberfoyle Park High School has a successful music program, one of the largest in the public school system outside specialist interest music centres. The curriculum offers diverse musical styles through a strong performance-based approach.

Specialist music program

This program offers students the opportunity to learn an ensemble instrument and participate in music ensembles throughout the year. This performance based program provides free, small group instrumental lessons and includes year level ensemble rehearsals and performances.

Students study music theory, basic keyboard skills, aural and composition skills and engage in music technology projects. The program emphasises practical application of musical skills, using technology in the performing arts computer suite with software like Sibelius, Auralia, Musition and Ableton.

For year 7 students, the specialist music program caters to both beginners and those with prior musical knowledge, delivered in four lessons per week.

Students participate in ensemble rehearsals, performances, and music technology projects, while receiving free instrumental tuition during school hours or privately at their own cost. Participation in evening performances each semester is encouraged.



The arts

All students have the opportunity to experience a range of specialist art rotations across year 7 and 8. This includes a 10 week music general course, alongside exposure to visual arts, dance and drama.

Students are exposed to different forms of the arts, which inform their choices to pursue their interests in the later years. In the second half of year 8, students have the option to select a one semester elective subject in the arts, which may include visual art, dance and/or drama.

The school offers a range of art subjects up to year 12, including:

- drama
- dance
- creative arts
- music performance - solo
- music performance - ensemble
- music explorations.

These courses are tailored to suit student interests and strengths across all areas of the arts. Students interested in pursuing music studies in later years can also select the specialist music program, in conjunction with music tuition. Free instrumental lessons are available for students undertaking music studies. Instrument offerings include woodwind, strings, brass, percussion and bass guitar.



Academic programs

Making subject choices

During term 3 students select subjects for the following year.

In preparation for subject selection, we suggest that parents/caregivers and students discuss the following:

- short and long term goals
- interests and aspirations – both in and beyond school, including further study or careers
- strengths and passions
- subject achievements thus far students should discuss with care group and subject teachers
- potential university/TAFE courses, including any required and assumed knowledge for entry into tertiary study
- possible career development courses
- subjects to help prepare for possible future pathways.

Students will be supported through the process of subject selection for the following year via career development sessions in wellbeing for learning lessons, during daily care group sessions and through the pathway planning process for students entering years 11 and 12.

Parents will also receive specific year level information about the course counselling process.



The South Australian Certificate of Education (SACE)

The South Australian Certificate of Education (SACE) is awarded to students who have successfully completed their senior secondary schooling in South Australia.

The SACE is studied in year 11 (stage 1) and year 12 (stage 2) and is designed to equip students with the skills, knowledge, and personal capabilities to successfully participate in our fast paced global society.

Completion of the SACE is a pathway to further education including study at university or TAFE, a trade or employment. When studying the SACE students are required to study compulsory subjects and have the opportunity to choose subjects that suit their interests, skills and career goals, spanning a wide range of learning areas including:

- the arts
- business and enterprise
- enterprise and technology
- English
- languages
- health and physical education
- humanities and social sciences
- mathematics
- sciences.

Flexibilities in the SACE include cross-disciplinary subjects, recognition of community learning and opportunity to study a vocational education and training (VET) course

Academic programs

Career development

Career development is not just about choosing a job or a course, it is about gaining the skills to navigate life, learning and work successfully.

At Aberfoyle Park High School, career development competencies are built into our curriculum and wellbeing for learning programs from years 7 to 12.

These career development competencies cover the 3 areas

- area A - personal management
- area B - learning and work exploration
- area C - career building.

Our career development program is guided by the Australian Blueprint for Career Development and industry insights. A professional career development practitioner leads the school's efforts, ensuring students have the opportunity to build lifelong transition skills for navigating their schooling and future careers.

Planned activities and industry engagement provide authentic experiences, helping students learn about themselves, explore options, set goals and take action.



Flexible industry programs (FIP)

A flexible industry program (FIP) in South Australia is designed to provide students with a tailored educational experience that combines school-based learning with vocational education and training (VET). These pathways aim to prepare students for specific industries by offering practical skills and knowledge alongside their secondary education.

Progression towards FIP starts in year 10, ensuring students are informed. FIPs can include school curriculum, VET studies and school-based apprenticeships or traineeships, combining paid work with education

Core to a flexible industry program are:

- integration with schooling and SACE
- industry - relevant training
- partnerships with industry
- pathways to employment or further education
- support and guidance.

A wide variety of industry and training options within FIPs are available to build around. As part of the Southern Adelaide and Fleurieu School Alliance (SAFSSA) Aberfoyle Park High School currently hosts construction programs in partnership with ATEC and ICT/Cyber in partnership with Adelaide Institute of Business and Technology (AIBT).

A FIP offers valuable opportunities, and success depends on students actively using their career development skills to navigate their path.

[For information on identified FIP industries, visit studentpathways.sa.edu.au](http://studentpathways.sa.edu.au)

Academic programs

International program

Our school participates in an active international program that provides our local students, staff, and community with the opportunity to understand other cultures and better understand and participate as members of our global community. In previous years we have hosted long term international students from Chile, China, France, Germany, Japan, Korea and the Philippines.

Graduate program

This is a long term program with graduate students staying for up to five years to complete their secondary studies to achieve their South Australian Certificate of Education (SACE). For further information go to: www.internationalstudents.sa.edu.au.

Study abroad program

In this program students experience the Australian way of life while studying at school. They can stay for up to a year. Students then return to their home country to complete their high school studies.

Study tour program

A group of students from a country spend up to two weeks in our school to get a taste of Australian life. The program includes English classes, participation in mainstream lessons, and excursions in the Adelaide area. The program has been acknowledged and recognised by visiting schools for its quality and success.



Sport

The sporting calendar promotes and supports Secondary School Sport SA programs locally and nationally. We provide students from years 9 to 12 with over 20 specialised sports, health and fitness subjects to choose from.

Students from years 7 to 12 can participate in a variety of sporting activities such as athletics, basketball, netball, tennis, cricket, football, badminton, table tennis, cross country and aquatics. Students are encouraged to take part in as many activities as possible, as there is a strong emphasis on participation and engagement in lifelong physical activity.

Our house system supports and encourages teamwork, cooperation, participation and a sense of belonging. All students at Aberfoyle Park High School are allocated into one of four houses. In 2022 new house names were voted on by staff and students using Kaurna Language.

We have four houses:

- Karla (Red) - fire
- Tirntu (Yellow) - sun
- Yarta (Green) - earth
- Yarlur (Blue) - sea



Wellbeing

At Aberfoyle Park High School, we are guided by research indicating that students are more successful at school when educators use a trauma-informed approach to teaching and learning. This is why our school is committed to incorporating the Berry Street Education model into our classroom practice.

The wellbeing team includes assistant principals for middle and senior schools, year level leaders, student wellbeing leaders, social workers, youth workers a pastoral care worker and an Aboriginal education worker.

The wellbeing team offers support and strategies to:

- help students manage their relationships with peers, teachers, family and friends
- manage student concerns and build resilience
- improve attendance, learning and engagement at school.

Other supports include:

- course and career guidance
- information about and referrals to other support agencies
- developing social skills to navigate situations.

Wellbeing programs

Girl power

A safe, supportive space for neurodiverse girls to build confidence, connection, and communication skills. Through engaging activities, the program fosters emotional resilience, self-regulation, and self-awareness while exploring social issues important to the group.



Huddle and Hoops

A dynamic program using basketball and fitness to re-engage students in years 7 to 9 facing challenges with engagement, behaviour, and self-regulation. With a focus on goal setting, resilience and teamwork, students learn to break non-productive behaviour patterns and reconnect with their learning.

Boxing sessions

Delivered by Boxing Brothers Chris and Michael, this five-week program teaches discipline, resilience, and wellbeing through boxing techniques. Students also access an online fitness platform, supported by the wellbeing leader and support staff, ensuring continued learning and progress between sessions

Breakfast club

Run by our pastoral care worker, breakfast club provides a nourishing start to the day. Whether students need a meal or a calm space to connect and regulate, this welcoming environment sets them up for success. The club runs on Mondays and Fridays, 8.00am to 8.40am.

Culture connections

At Aberfoyle Park High School, we recognise and celebrate the diverse cultural backgrounds of students, staff and the community. These connections aim to create an inclusive and respectful environment that values diversity and promotes understanding among students.

Enrolment information

Transition to high school

Our transition program ensures that students feel prepared and supported within their new environment. We invite prospective families to tour our school and meet our dedicated staff.

During term 1 each year, we hold an open night to showcase our school facilities and specialist programs, along with parent information sessions throughout the year.

Aberfoyle Park High School zone

Our school zone is a defined residential area from which we accept the core intake of students. A student's zoned school is determined according to their primary place of residence.

To confirm if your residential address is within the shared zone, use the [Department for Education school finder tool](#)



Enrolment process

Year 6 students at public primary schools will receive application information from their school. There is an online registration of interest form for public school families who will receive a unique URL for their child via email or letter from their primary school at the beginning of term 2 each year.

Year 6 students at non-government schools who are in-zone and wish to apply for Aberfoyle Park High School can receive application information by emailing:
education.startingsecondaryschool@sa.gov.au

For students residing outside of the zone, acceptance is subject to capacity.

Principal tours

In addition, you may wish to join one of our Principal tours, which take place throughout the year.

[To book your tour, please click here for a full list of dates available.](#)



In school facilities and activities

Academic facilities

- High-standard classrooms and learning spaces equipped with state-of-the-art technology.
- A modern library with an extensive collection of books, online resources and study areas.
- Well-equipped science laboratories for experiments and research.
- Computer labs for computer assisted drawing
- Wood and metal work facilities.
- Laser cutting/3D printing spaces.
- Gas welding.
- Electric arc welding.
- Programming and robotics workshop.
- Performing arts centre, with a stage and audiovisual facilities for events and performances.

Extracurricular activities

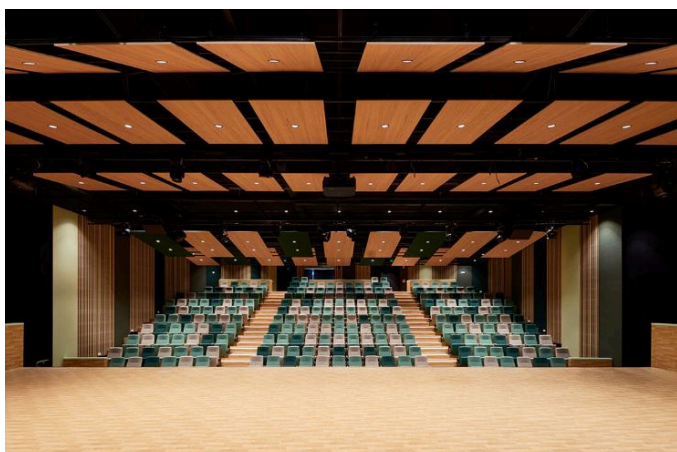
- After school learning support for years 10 to 12, three afternoons each week.
- Students can join academic clubs and leadership programs, such as debating and student council, to develop critical thinking and leadership skills.



The range of activities and clubs includes:

- arts club
- Memory Project
- robotics club
- coding club
- tech crew club
- choir
- concert band, big band, chamber ensemble and percussion ensemble.

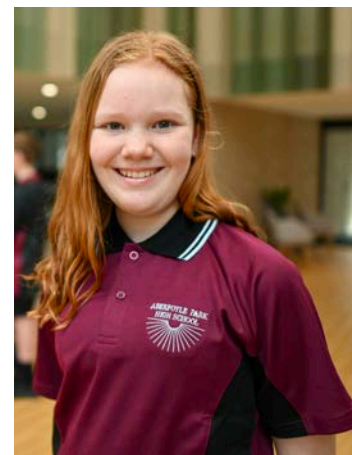
[For a full list of the current clubs, please here.](#)



Uniform policy

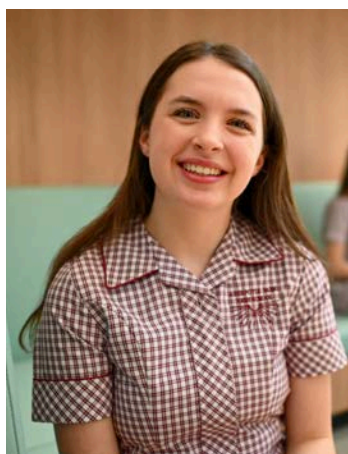
Middle school – year 7, 8 and 9

- Polo shirt – APHS uniform polo: short sleeve, maroon. No other layers should be visible beneath the polo.
- Pants – plain black, no leggings.
- Shorts – plain black; mid-thigh length.
- Black pleated skirt – plain black, mid-thigh length.
- Summer dress – APHS uniform dress; mid-thigh length.
- Hooded windcheater – APHS uniform hooded windcheater.
- Jackets – APHS uniform jacket.



Senior school – year 10, 11 and 12

- Polo shirt – APHS uniform polo: short sleeve. Senior School students can also wear the middle school polo shirt. No other layers should be visible beneath the polo.
- Pants – plain black, no leggings.
- Shorts – plain black; mid-thigh length.
- Black pleated skirt – plain black, mid-thigh length.
- Summer dress – APHS uniform dress; mid-thigh length.
- Hooded windcheater – APHS uniform hooded windcheater.
- Special year 12 jumper – ordered through the school.
- Jackets – plain black or APHS uniform jacket.



Sport, health and physical education (HPE)

- Students change into the PE uniform for HPE lessons and sport.
- The specific HPE uniform consists of the HPE top and shorts.

Jewellery

- To be inconspicuous and minimal.

Footwear - all year levels

- Plain black school shoes with fully enclosed top of shoe, closed back, or completely black sneakers with black laces.
- Slip on shoes that expose the top of the foot do not provide adequate protection and are not part of the uniform.





**Government
of South Australia**

Department for Education

Department for Education
T/A South Australian Government Schools
CRICOS Provider Number: 00018A