

2023 annual report to the Community

Aberfoyle Park High School

Aberfoyle Park High School number: 1673

Partnership: South Valley



School principal:

Marion Coady

Date of endorsement:

20/02/2024



Context Statement

Aberfoyle Park High School caters for students from 7-12. At the time of this report, the enrolment in 2023 is 1057. Aberfoyle Park High School is classified as Category 6 on the Department for Education Index of Educational Disadvantage. At the time of this report, the school population includes 2% Aboriginal students, 9% students with disabilities, 3% students with English as an additional language or dialect (EALD) funded background, 1% children/young people in care. Further information about the school is available on the school's website (including its context statement), as well as the My School website.

Governing Council Report

It was another full year at Aberfoyle Park High School and the Governing Council worked hard to support staff and parents create a positive, energetic and inclusive working environment for our students.

The launch of Yondr pouches to support the Governments ban on mobile phones and the continued integration of year 7s into high school life created a busy start to the year as did the final stages of the building program. The completion of the building program was a major accomplishment for the school in 2023 and the result, though not without its teething problems, is excellent.

Our young people face many challenges in the world today and the Governing Council had many robust discussions on policies around technology, behaviour management, vaping and the emergence of AI in schools. Many of these challenges will be ongoing for our school community, as for all school communities, and the Governing Council continues to support the staff and leadership of the school in their important roles in the lives of our young people.

Finances are an important part of the Governing Council agenda and we were pleased to approve a balanced budget for 2024 with no increase in the Materials and Service Charge in spite of increased costs of living.

The highlights of most meetings are the reports we receive from the school's student leaders, from staff, and from the Principal. There are always so many exciting and positive things happening in our school community from sports events to music, drama and dance performances, and from extra-curricular events such as debating and STEM contests, to special events and days to recognise and support a range of important causes.

As always, the school year finished with the farewell of our year 12s and we wish them the very best for the next step in their life journeys.

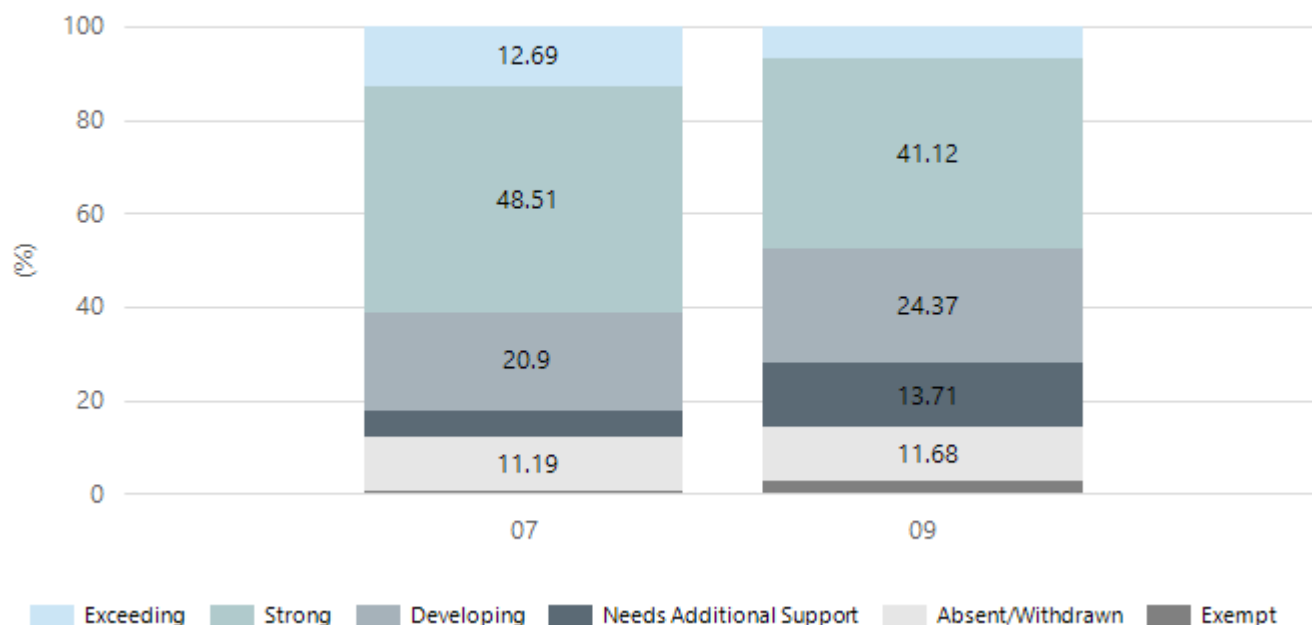
On a personal note, 2023 marks the end of my 10 years of service on Governing Council as my youngest child leaves the school. Our family have been so grateful to the staff, students, parents and volunteers who all work so hard to make Aberfoyle Park High School such a great school. Thank you and I wish everyone a fabulous 2024 and beyond.

Performance Summary

NAPLAN Proficiency

In 2023, the Australian Curriculum, Assessment and Reporting Authority (ACARA) - a Commonwealth Independent statutory authority - announced changes to NAPLAN performance reporting. This new way of reporting by ACARA that NAPLAN results from 2023 will not be comparable to previous years. The new approach replaces the previous numerical NAPLAN bands and the national minimum standard.

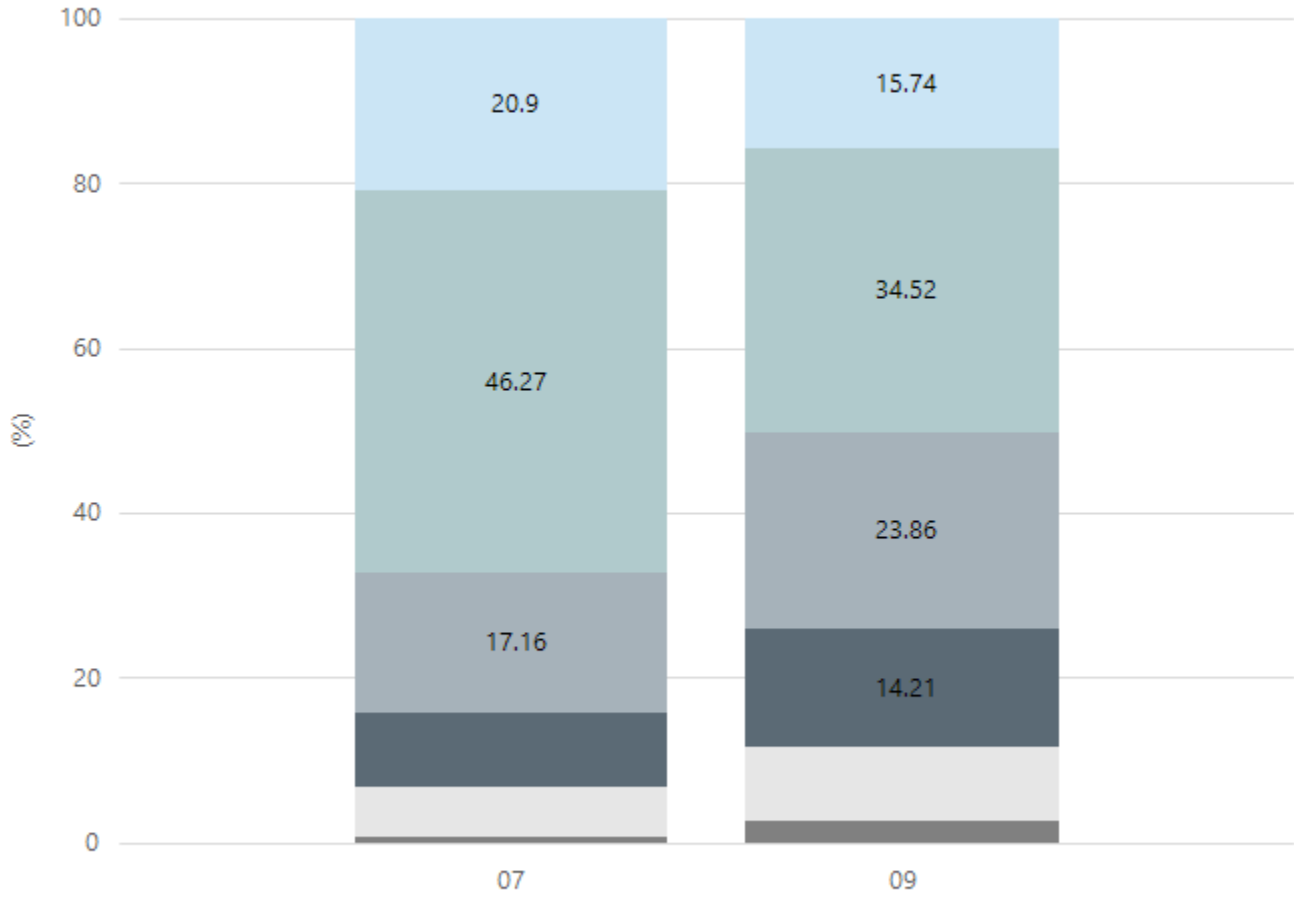
Numeracy



Year Level	07	09
Exceeding	17	13
Strong	65	81
Developing	28	48
Needs Additional Support	8	27
Absent/Withdrawn	15	23
Exempt	1	5
Total	134	197

Data Source: Department for Education Assessment Data Holdings, 2023. When there are less than six students in a cohort, no data is supplied.

Reading

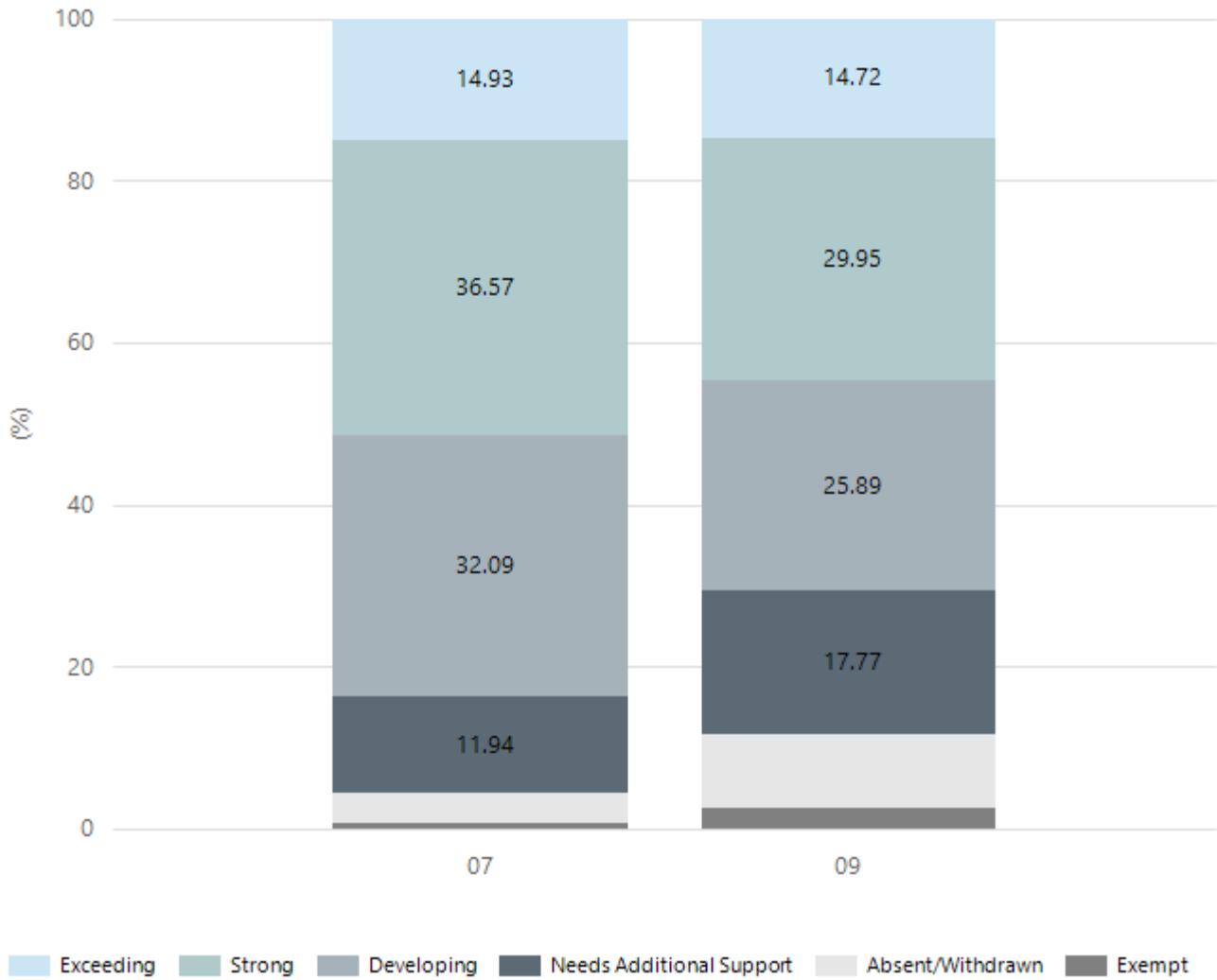


■ Exceeding
 ■ Strong
 ■ Developing
 ■ Needs Additional Support
 ■ Absent/Withdrawn
 ■ Exempt

Year Level	07	09
Exceeding	28	31
Strong	62	68
Developing	23	47
Needs Additional Support	12	28
Absent/Withdrawn	8	18
Exempt	1	5
Total	134	197

Data Source: Department for Education Assessment Data Holdings, 2023. When there are less than six students in a cohort, no data is supplied.

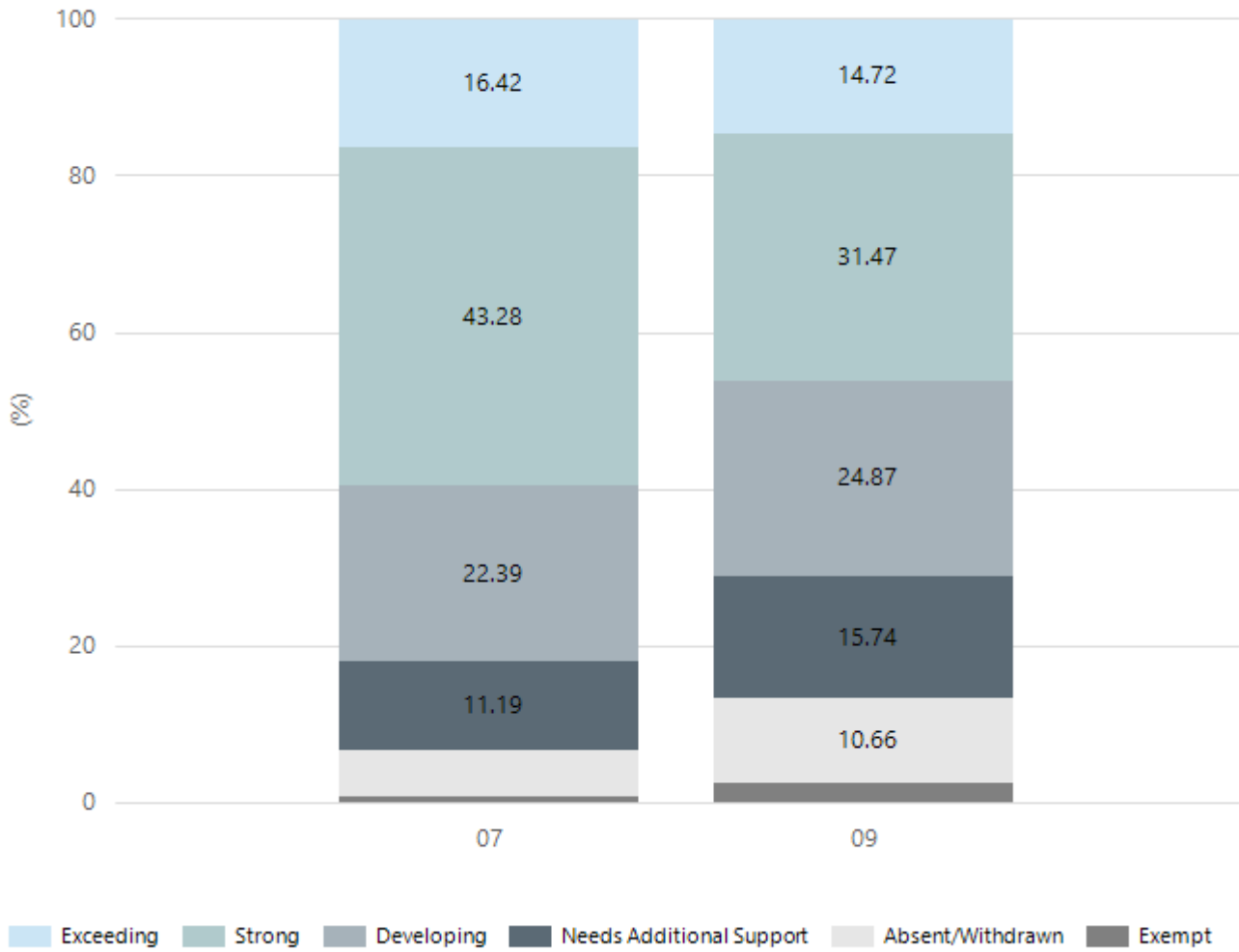
Writing



Year Level	07	09
Exceeding	20	29
Strong	49	59
Developing	43	51
Needs Additional Support	16	35
Absent/Withdrawn	5	18
Exempt	1	5
Total	134	197

Data Source: Department for Education Assessment Data Holdings, 2023. When there are less than six students in a cohort, no data is supplied.

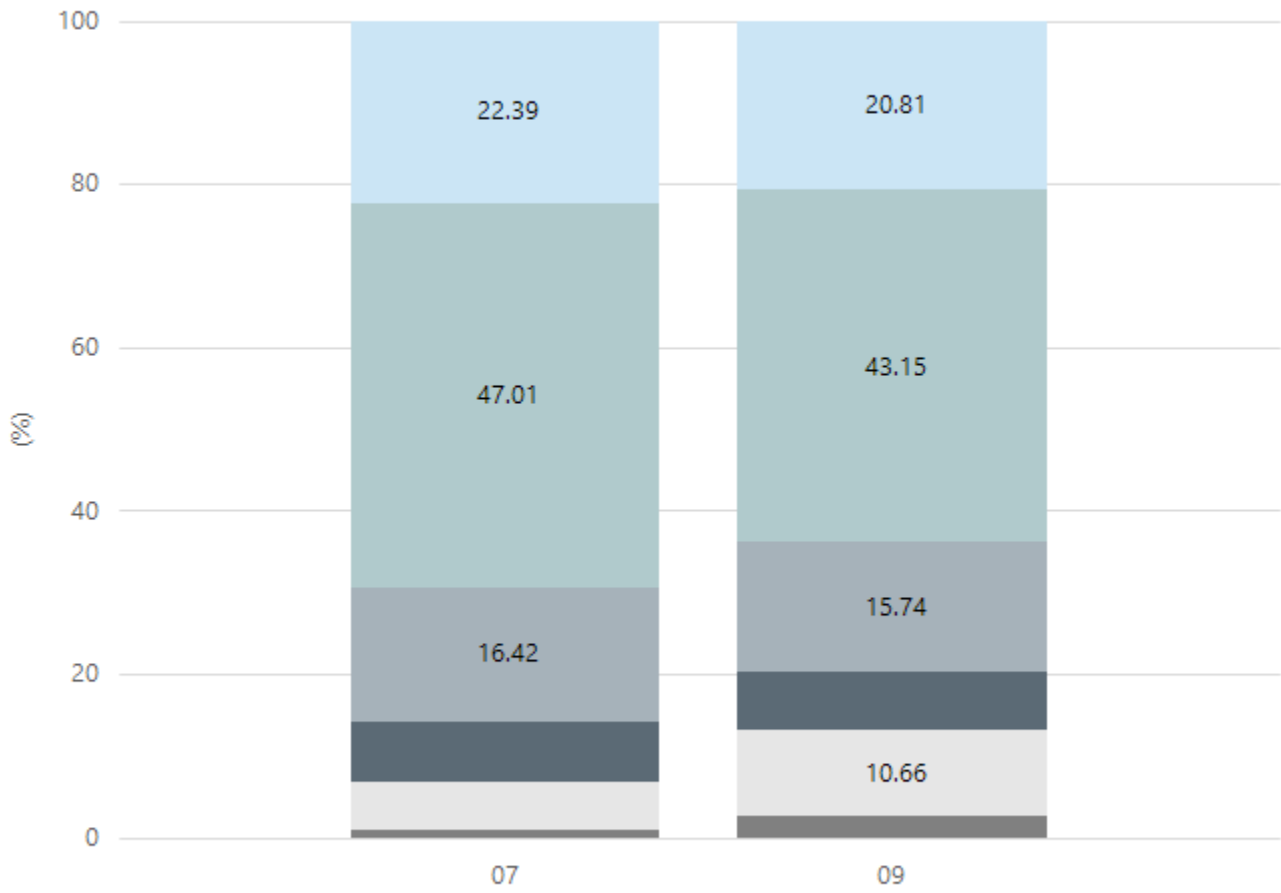
Grammar



Year Level	07	09
Exceeding	22	29
Strong	58	62
Developing	30	49
Needs Additional Support	15	31
Absent/Withdrawn	8	21
Exempt	1	5
Total	134	197

Data Source: Department for Education Assessment Data Holdings, 2023. When there are less than six students in a cohort, no data is supplied.

Spelling



■ Exceeding
 ■ Strong
 ■ Developing
 ■ Needs Additional Support
 ■ Absent/Withdrawn
 ■ Exempt

Year Level	07	09
Exceeding	30	41
Strong	63	85
Developing	22	31
Needs Additional Support	10	14
Absent/Withdrawn	8	21
Exempt	1	5
Total	134	197

Data Source: Department for Education Assessment Data Holdings, 2023. When there are less than six students in a cohort, no data is supplied.

South Australian Certificate of Education – SACE

SACE Stage 2 Grades - Percentage of grades that are C- or above for attempted SACE subjects (SEA)

2020	2021	2022	2023
100%	100%	99%	100%

Data Source: SACE School Data Reports, as of February 2023 for 2020-2022. 2023 SACE results are School supplied data. When there are less than six students, no data is supplied. Due to rounding of percentages, total results may not add up to 100%.

SACE Stage 2 Grade Distribution

Grade	2020	2021	2022	2023
A+	1%	1%	3%	3%
A	9%	8%	9%	7%
A-	15%	14%	10%	12%
B+	13%	15%	12%	14%
B	15%	15%	17%	15%
B-	14%	13%	14%	13%
C+	13%	15%	17%	15%
C	17%	15%	14%	17%
C-	3%	2%	3%	4%
D+	1%	1%	1%	0.7%
D	0%	0%	0%	0.4%
E+	0%	0%	0%	0%

Data Source: SACE School Data Reports, as of February 2023 for 2020-2022. 2023 SACE results are School supplied data. When there are less than six students, no data is supplied. Due to rounding of percentages, total results may not add up to 100%.

SACE Completion - Percentage of completers out of those students who had the potential to complete their SACE in October that year

2020	2021	2022	2023
100%	99%	100%	100%

Data Source: SACE School Data Reports, as of February 2023 for 2020-2022. 2023 SACE results are School supplied data. When there are less than six students, no data is supplied. Due to rounding of percentages, total results may not add up to 100%.

Year 12 Students undertaking Vocational or Trade Training (VET)

	2021	2022	2023
Percentage of Year 12 students undertaking Vocational Training or Trade Training	47.80%	53.97%	35.14%
Percentage of Year 12 students attaining a Year 12 certificate or equivalent VET qualification	100%	99%	100%

Data Source: School supplied data

School Attendance

Year Level	2021	2022	2023
Year 07		87.0%	88.9%
Year 08	89.9%	84.8%	85.3%
Year 09	84.8%	83.8%	80.8%
Year 10	85.4%	83.9%	84.0%
Year 11	85.5%	81.8%	83.2%
Year 12	84.8%	86.2%	87.3%
Total	86.0%	84.6%	84.6%

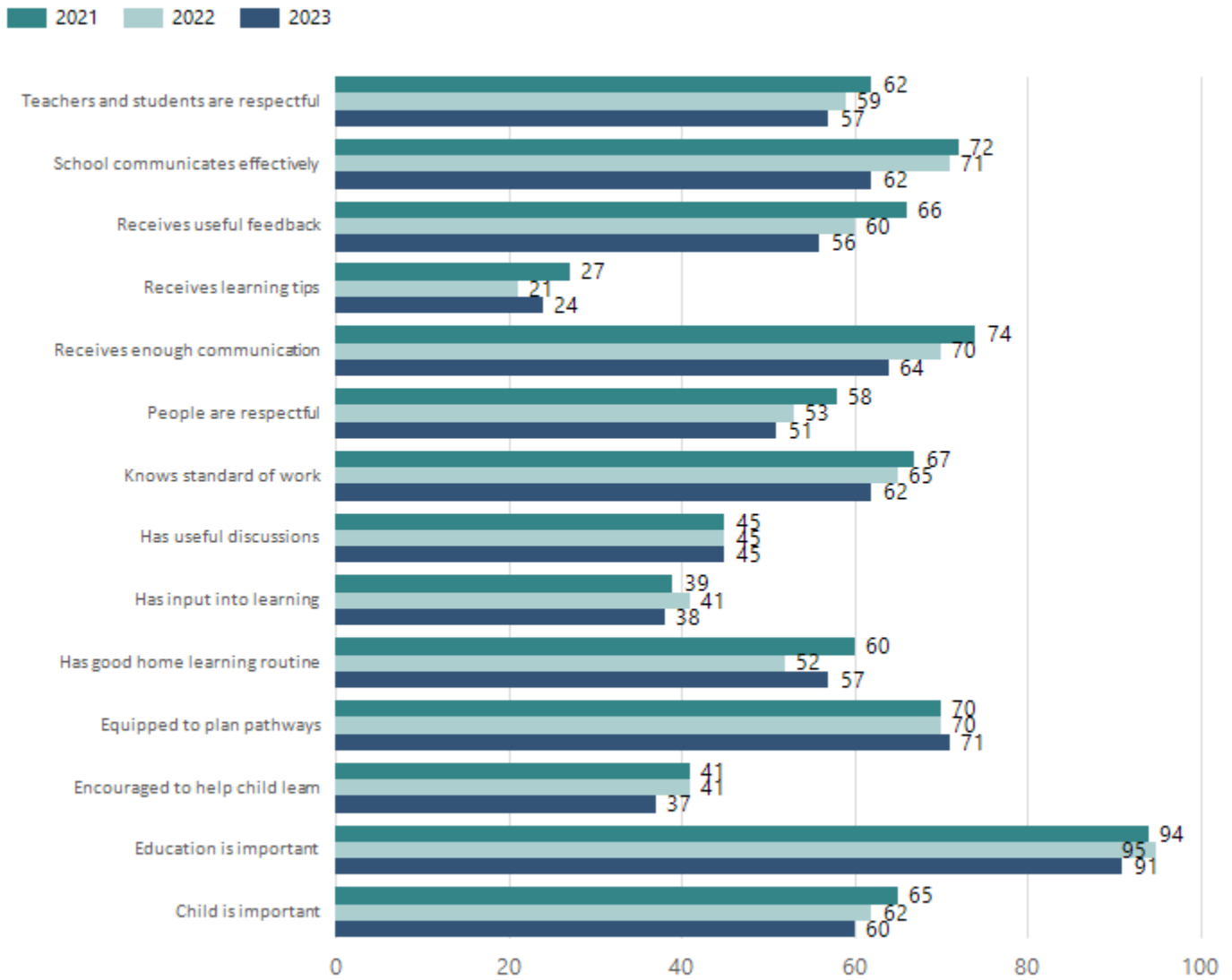
Data Source: Department for Education Attendance Data, Semester 1 Report 2023. A blank cell indicates there we no students enrolled. 'Primary Other' includes students enrolled in specialised education options. 'Secondary Other' includes students who have already spent a year at Year 12 and elected to undertake further study at Year 12.

Attendance Comment

In South Australia, all children and young people must be in school from 6 years to 16 years old. They must attend a government or non-government school full time. From age 16 to 17 however, young people must attend school or an approved learning program (such as an apprenticeship, traineeship, accredited course or university). Schools and parents must encourage and support students to come to school every day. Parents and caregivers must make sure their child is enrolled in a school, and attends school all day and everyday it is open, unless a child is sick or has an approved exemption. Teachers and leaders actively follow up when a student misses school, including recording all absences and non-attendance. All schools in South Australia have local attendance procedures governed under the Education and Children's Services Regulations 2020.

Parent Opinion Survey Results

Proportion of agree/strongly agree response(%)



Data Source: 2023 Department for Education Parent Opinions Survey, Term 3 2023.

Intended Destination

Leave Reason	Number	%
NG - ATTENDING NON-GOV SCHOOL IN SA	20	21.0%
OV - LEFT SA FOR OVERSEAS	31	33.0%
PE - PAID EMPLOYMENT IN SA	5	5.0%
SM - SEEKING EMPLOYMENT IN SA	11	12.0%
TG - TRANSFERRED TO SA GOVERNMENT SCHOOL	22	23.0%
VI - LEFT SA FOR VIC	3	3.0%

Data Source: Department for Education Destination Data Report, 2023. Data extract term 3 2023. Data shows recorded destinations for students that left the school in the previous year. Data is uploaded by schools in term 3 and may not reflect final or total figures at time of report creation.

Highest Qualifications held by the teaching workforce and workforce composition

All teachers at this school are qualified and registered with the SA Teachers Registration Board.

Qualification Level	Number of Qualifications
Bachelor's degrees or Diplomas	41
Postgraduate Qualifications	46

Data Source: Data extracted from Mandatory Workforce Information Collections as on the last pay date of June 2023. As self-reported by staff in the system.

Please note: Data includes staff who are Actively employed and on extended paid leave. Please note only the highest qualification of the Teaching staff is reported. Excludes any number of other certifications earned.

Workforce composition including indigenous staff

	Teaching Staff		Non-Teaching Staff	
	Indigenous	Non-Indigenous	Indigenous	Non-Indigenous
Full-Time Equivalent	1.0	80.2	2.0	25.7
Persons	1.0	86.0	2.0	32.0

Data Source: Data extracted from Mandatory Workforce Information Collection as on the last pay date of June 2023.

Please note: Data includes staff who are actively employed and on extended paid leave. "Indigenous category" is self-reported by staff in the system.

Financial Statement

Funding Source	Amount
Grants: State	\$13,860,276
Grants: Commonwealth	\$6,500
Parent Contributions	\$903,954
Fund Raising	\$1,445
Other	\$144,690

Data Source: School supplied data.